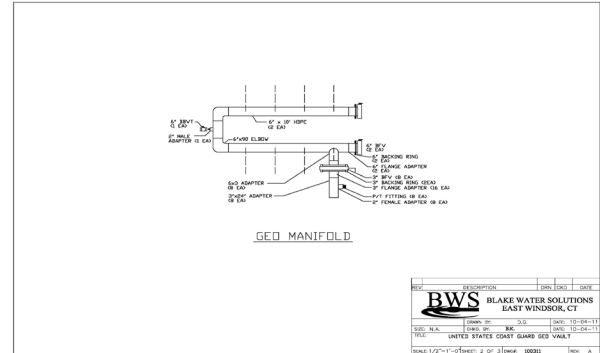


GEO VAULTS AND MANIFOLD SOLUTIONS



WHY CHOOSE BWS GEO Vaults?

- 15 years Vault Manufacturing Experience
- PE and ME Design Support
- Trained Sales, Factory, Installation Teams
- 13 locations
- Manufactured In-house, Tight Quality Control
- Factory Tested to Specifications
- "Plug and Play" Construction
- Umbrella Peak Performance Warranty



Precast Concrete NPCA Certified Vaults

Engineering and Design Assistance



Built to Specifications

BWS VAULT FEATURES

- Vaults - Precast Concrete from NPCA Certified Providers
- H-20 Rated
- HDPE Manifold Construction
- Butt and Socket Fused Joints
- Seams - Field Sealed for Integrity
- Core Penetrations -Link Sealed
- Integral Sump Pump and Sump
- Manhole Options(Gasketed, H-20)
- Roomy, Easily Serviceable
- OSHA Standard Ladder
- Lights and Ventilation(Optional)
- Thermostatically Controlled Heating for Freeze Prevention(Optional)



4 New Park Road East Windsor, CT 06088 860-243-1491
www.BlakeEquip.com



BWS-GEOVault/Manifold-201805
Printed in the USA

GEO VAULTS AND MANIFOLD SOLUTIONS



BWS MANIFOLD FEATURES

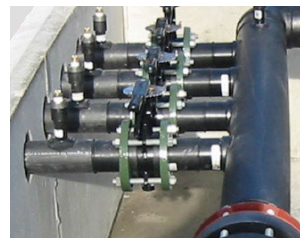
- 20 Years of Manifold and Pump Station Experience
- PE and ME Design Support
- Constructed with HDPE Pipe
- Butt and Socket Fused Joints
- All Valves, Pressure/Temperature Ports, Gauges, Indicators, Balancing/Isolation Valves, Valved Mains, Fill/Purge Ports Included
- Factory Pressure Tested to Specifications
- Connections Stubbed out from Vault and Link Sealed
- Sealed Inlet Caps for Delivery
- Built for Ease of Field Service, Components Replaceable without Heat Fusion
- Umbrella Peak Performance Warranty



Ball Valves



Balancing Valves



**HDPE, Butt and
Socket Fused
Joints**

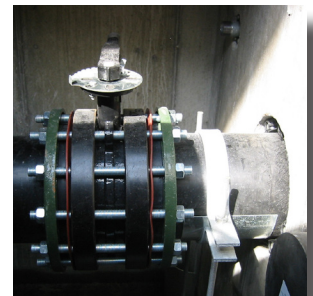


Butterfly Valve



Fill/Purge Ports

Galvanized Supports



Main Cutoff



**Quality Control throughout the
Manufacturing Process**



4 New Park Road East Windsor, CT 06088 860-243-1491
www.BlakeEquip.com



BWS-GEOVault/Manifold-201805
Printed in the USA